

## ADA Audio Conference Series January 17, 2012

This session is scheduled to begin at  
2:00pm Eastern Time

Real-Time Captioning and the PowerPoint Presentation are available through the Webinar Platform. Audio Connection is available through streaming audio and/or telephone only.

1



**Webinar Features – For those connected via webinar platform only**

- **Closed captioning** – click **CC** icon (top of screen) or control-F8 and adjust the captioning screen as needed
- **Customize your view** – choose “View” from the menu bar at the top of the screen and choose the layout you prefer from the dropdown menu.
- **Questions – May be** submitted in the Chat Area Text box. Keystrokes to enter the chat area are Control-M.
- **Emotions/Hand-raising:** Please do not use these features during this session unless directed by the presenter.

2

# **Refresh on the 2010 ADA Accessibility Standards**

**By:  
Earlene Sesker, Accessibility Specialist  
US Access Board**

**UNITED STATES ACCESS BOARD**

3

## **2010 ADA Standards**

- 1. Application & Administration**
- 2. Scoping Requirements**
- 3. Building Blocks**
- 4. Accessible Routes**
- 5. General Site & Building Elements**
- 6. Plumbing Elements & Facilities**
- 7. Communication Elements & Features**
- 8. Special Rooms, Spaces & Elements**
- 9. Built-In Elements**
- 10. Recreation Facilities**

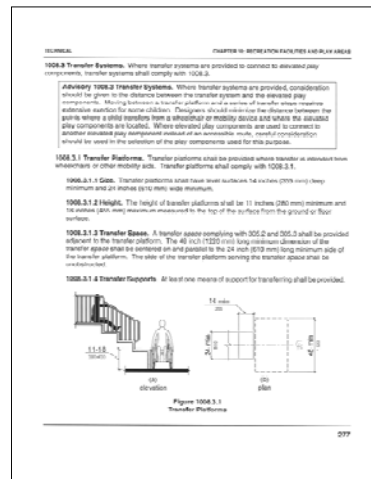
4

# 2010 ADA Standards

- Better access and compliance
- Improved format and usability
- Consistency with ABA guidelines
- Harmonization: model building codes and industry standards

# Format

- Numbering System
- New figures (informational only)
- All dimensions stated in text
- New advisory notes (non-mandatory)

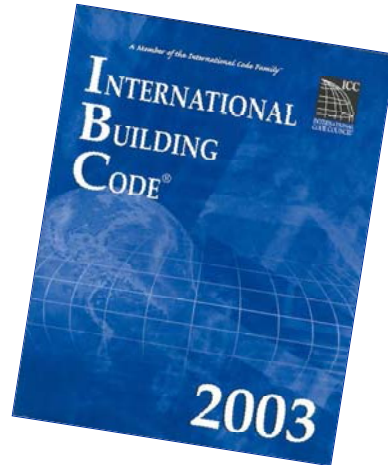




## Harmonization



ICC/ANSI A117.1-2003



IBC 2003

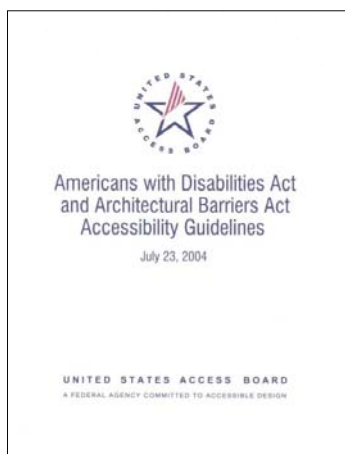
7

## Using the New ADA Standards

UNITED STATES ACCESS BOARD

8

## Content of the new ADA standards



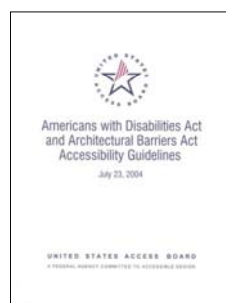
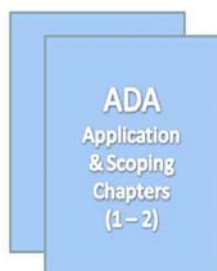
Based on the Board's updated *ADA Accessibility Guidelines – "ADAAG"* (2004)

UNITED STATES ACCESS BOARD

9



## DOJ's ADA Standards (2010)



Excluding ABA Chapters 1 & 2 (pp. 72 – 140)

10

## **Additional Design Requirements (DOJ's regulations)**

- **Social Service Center Establishments**
- **Housing at Places of Education**
- **Assembly Areas**
- **Medical Care Facilities**
- **Residential Dwelling Units**
- **Detention and Correctional Facilities**
- **Places of Lodging**

11

## **DOJ's ADA Standards (2010)**

**Apply to construction/ alteration of:**

- **state & local government facilities (title II)**
- **places of public accommodation (title III)**
- **commercial facilities (title III)**



**Except: transportation facilities  
(covered by similar standards issued  
by DOT in 2006)**

12

## Referenced Standards

- powered doors (ANSI/BHMA A156.10 & A156.19)
- elevators and lifts (ASME A17.1 & A18.1)
- egress (IBC)
- alarms (NFPA 72)
- play surfacing & equipment (ASTM standards)

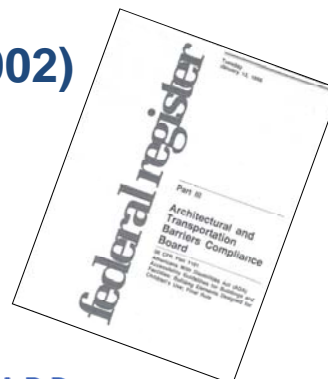
UNITED STATES ACCESS BOARD

13

## Earlier ADAAG Supplements

- State & Local Gov't Facilities (1998)
- Children's Environments (1998)
- Play Areas (2000)
- Recreation Facilities (2002)

Included in the 2010  
Standards without  
substantive changes



UNITED STATES ACCESS BOARD

14

# Subject Index (pp. 294 – 304)

LIST OF FIGURES AND INDEX			LIST OF FIGURES AND INDEX
<b>A</b>	Amusement Rides)		ATMs (see Automatic Teller Machines)
ABA (Architectural Barriers Act)	ABA Definition of: 80		Automatic Fare Machines (see Fare Machines)
Accessible	ABA Scoping: 85, 86, 110, 131, 132, 133		Automatic Teller Machine
ABA Definition of: 79	ADA Definition of: 12		ABA Scoping: 113
ADA Definition of: 12	ADA Scoping: 27, 28, 32, 42, 62, 63		Common Technical: 206, 209, 210
Accessible Means of Egress	Common Technical: 201, 202, 203, 204		Bus Stops)
ABA Definition of: 79	Annual Supplement Areas		ABA Definition of: 80
ADA Definition of: 12	ABA Scoping: 27		ABA Definition of: 13
Accessible Routes	ADA Scoping: 22		Common Technical: 206, 208
ABA Scoping: 79, 85, 87, 88, 90, 91, 92, 93,	ANSI/BIAA		Bus Shelters
94, 95, 97, 98, 99, 100, 102, 103, 104, 105,	ABA Referenced Standard: 79		ABA Scoping: 86, 100, 103
116, 117, 120, 126, 129, 131, 136, 139, 140	ADA Referenced Standard: 9		ADA Scoping: 20, 32, 63
ADA Scoping: 12, 18, 20, 21, 22, 23, 24, 25, 26, 27,	Common Technical: 163, 164, 165, 162		Common Technical: 208
28, 29, 30, 31, 32, 34, 35, 36, 37, 44, 46, 48, 50,	Area of Sport Activity		Bus Signs
51, 58, 60, 70	ABA Definition of: 80		Common Technical: 203
Common Technical: 145, 150, 154, 155, 156, 154,	ADA Definition of: 13		Bus Stops
168, 170, 187, 188, 189, 190, 242, 243, 252, 251,	ADA Scoping: 15, 21, 25, 30, 41, 44, 45, 46, 47,		ABA Scoping: 101
263, 264, 265, 266, 271, 272, 273, 274, 275, 276,	48		ADA Scoping: 35, 36
279	Common Technical: 104, 101, 103, 234		Common Technical: 201, 202, 203
ADA (Americans with Disabilities Act)	Assistive Listening Systems)		Cafeterias (see Restaurants and Cafeterias)
Accessibility	ABA Definition of: 80		Calculation of Percentages
ABA Definition of: 79	ABA Scoping: 85, 105, 112, 113		ABA Scoping: 79
ABA Scoping: 72, 86, 88, 87, 88, 94, 126, 130, 139	ADA Definition of: 12		ADA Scoping: 6
ADA Definition of: 12	ADA Scoping: 41, 44, 45		Common Technical: 201, 202, 203
ADA Scoping: 6, 10, 26, 61, 67	Common Technical: 201, 234, 205		
Air Traffic Control Towers	Assistive Listening Systems)		
ABA Scoping: 43	ABA Definition of: 80		
ADA Scoping: 14	ABA Scoping: 85, 105, 112, 113		
Aisle Seats (see Designated Aisle Seats)	ADA Definition of: 12		
ADA Scoping: 41, 44, 45	ADA Scoping: 41, 44, 45		
Common Technical: 104, 101, 103, 234	Common Technical: 201, 234, 205		
Alterations)	ASTM		
ABA Definition of: 79	ABA Referenced Standard: 79		
ABA Scoping: 72, 86, 88, 87, 88, 92, 93, 94, 97,	ABA Scoping: 99		
104, 105, 117, 118, 119, 126, 127, 129, 130, 131,	ADA Referenced Standard: 9		
132	ADA Scoping: 19		
ADA Definition of: 12	Common Technical: 279		
ADA Scoping: 6, 10, 19, 19, 20, 23, 25, 26, 28, 36,			
37, 44, 62, 61, 66, 67, 63			
Common Technical: 166, 168, 169, 246, 256			
294			295

## New Construction

**All areas must comply except:**

- Exempted structures/ spaces
- Work areas (ADA facilities)
- Partially scoped spaces



## **Accessible Parking Scoping**

### **Van Accessible Spaces**

- **1 van space for every 6 accessible spaces required \***
- **There will always be at least one van space required**

**UNITED STATES ACCESS BOARD**

17

## **Access Aisle Markings**

### **Guidelines Require**

**“marked so as to discourage parking in them” \***

**Specific requirements may be a function of local code for regulating parking**

**UNITED STATES ACCESS BOARD**

18

## Parking Space Signs

- International Symbol of Access required to designate and reserve accessible spaces
- 60 inches minimum to bottom of sign \*
- “Van Accessible” added for van spaces
- Exception: sign not required where 4 or fewer spaces are provided \*



Van Accessible

UNITED STATES ACCESS BOARD

19

## Passenger Loading Zones



At least 1 for every 100 linear ft. of loading zone space provided

20

## Passenger Loading at Entrance

- Canopy not required (2010 ADA Standard)



UNITED STATES ACCESS BOARD 21

## Opening Force

Exterior Doors: Automation Recommended



Required at GSA buildings  
(Public Building Service Standards)

22

## **Entrances (206.4)**

**At least 60% of public entrances must comply**

**Public entrance = any entrance that is not a service or restricted entrance**

23

## **Secured Entrances (404.1)**

**Doors operated only by security personnel exempt from provisions for:**

- **Hardware (404.2.7)**
- **Closing speed (404.2.8)**
- **Opening force (404.2.9)**



**(automated doors subject to clear width & threshold requirements only)**

24

## Maneuvering Clearance

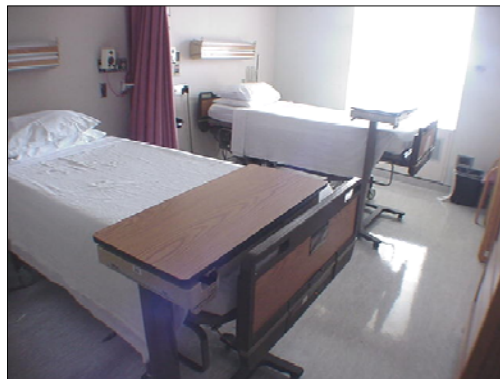
Compliance with 404.2.4  
required for:

- Power-assisted doors
- Automatic doors on accessible MOE (except those with standby power or that stay open in power-off mode)



25

## Maneuvering Clearances



Hospital Patient Rooms:  
latch side clearance not required at entry doors  
(404.2.4, exception)

26

## Door Surface (404.2.10)

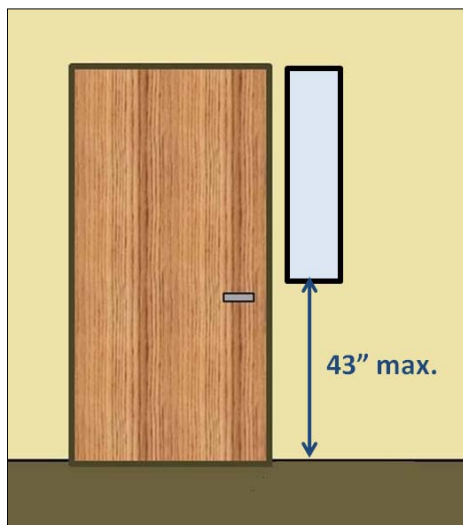
Bottom 10" must be smooth (full width of door)



Kick plates can be used to protect door

27

## Vision Lights (404.2.11)



If provided, vision  
lights: 43" max. AFF  
(not required if  
bottom edge is  
above 66")

28

## Break Out Opening



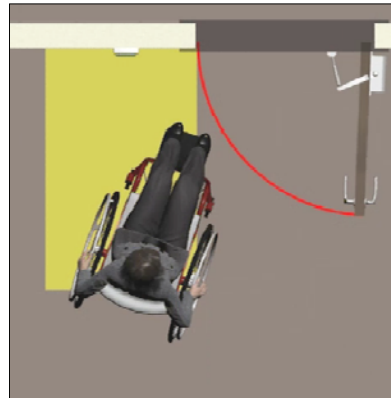
**Doors on MOE:  
32" min. clear break out  
opening (emergency  
mode)**

**Unless:**

- **Door has standby power**  
**or**
- **Compliant manual door  
serves the same MOE**

29

## Controls



**Wheelchair space at controls must be outside  
the door swing**

30

# Accessible Routes

## Elevator Exceptions

### Public (Government) sector:

2 story – access not required to non-public floor with max. occupancy of 5 (e.g., boat traffic tower)

UNITED STATES ACCESS BOARD

31

# Accessible Routes

## New exception for press boxes

- 500 sq ft or less (aggregate)
- on bleachers entered on 1 level
- or elevated 12' or more (free standing)



32



# Accessible Routes

## Clarifications

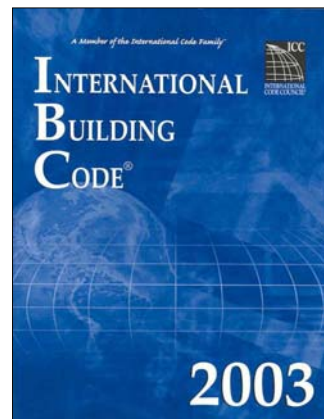
- access not req'd if no pedestrian route provided
- if circulation path interior, accessible route must be interior
- mezzanines – vertical access not req'd where elevator not req'd

UNITED STATES ACCESS BOARD

33

# Accessible Means of Egress

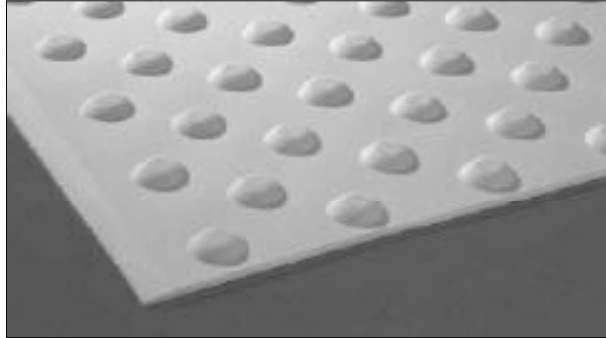
- Reference to the International Building Code (IBC)
- Standby power for platform lifts on egress routes



UNITED STATES ACCESS BOARD

34

# Detectable warnings



35

## Detectable Warnings

**Required on boarding platform edges only  
(and curb ramps covered by DOT standards)**

**No longer required at:**

- **curb ramps (except at transportation facilities covered by DOT standards)**
- **hazardous vehicular areas**

**Rulemaking on public rights-of-way to  
revisit issue**

**UNITED STATES ACCESS BOARD**

36

# Work Areas

## (203.9)

- “approach, entry, & exit”
- circulation paths (in areas  $\geq 1000$  sq ft)
- means of egress
- visual alarm connection

UNITED STATES ACCESS BOARD

37

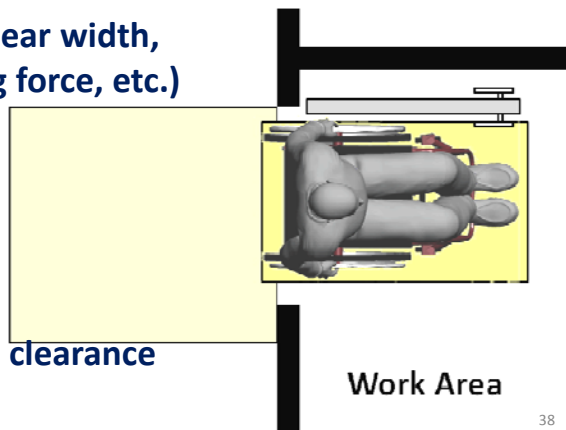
# Work Areas

## Access for “approach, entry, & exit”

- Door man. clearance (exterior)
- Compliant door (clear width, hardware, opening force, etc.)
- Clear floor space

### Recommended:

- Interior door man. clearance
- Turning space



38

# Work Areas

## Accessible circulation paths



### Exceptions:

- areas < 1000 sq. ft.
- paths = integral part of equipment
- exterior areas fully exposed to weather

39

# Toilet Rooms

UNITED STATES ACCESS BOARD

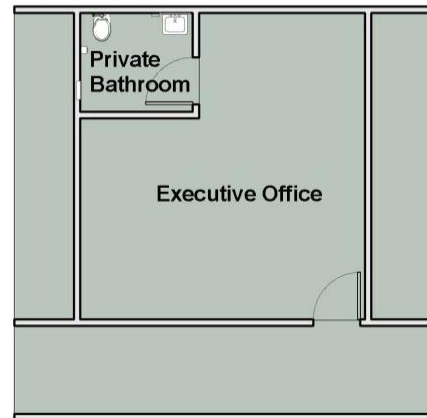
40

# Private Toilet Rooms

“Adaptable” access permitted

- private (not common) use
- single occupant
- accessed only through private office

(clarified in the new  
*ADA-ABA standards*)



41

# Private Toilet Rooms

Adaptability allows:

- later provision of grab bars  
(reinforcement/ blocking)
- alternative toilet seat & lavatory heights
- removable base cabinetry at lavs
- door swing into fixture clearances  
(where swing can be reversed)

42

# Clustered Toilet Rooms

New exception:

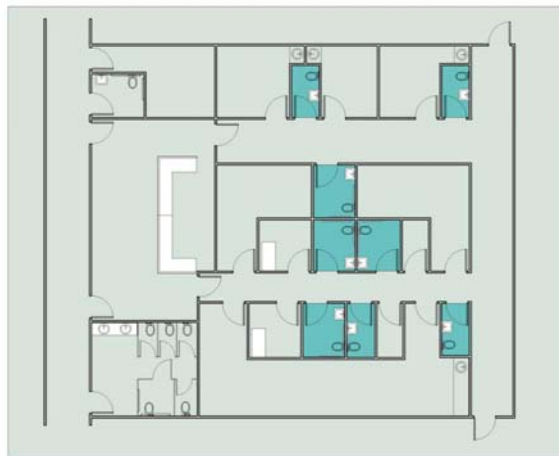
Access to at least 50% of single user toilet rooms clustered at one location that serve same users (instead of 100%)

UNITED STATES ACCESS BOARD

43

# Clustered Toilet Rooms

Example: medical office suite

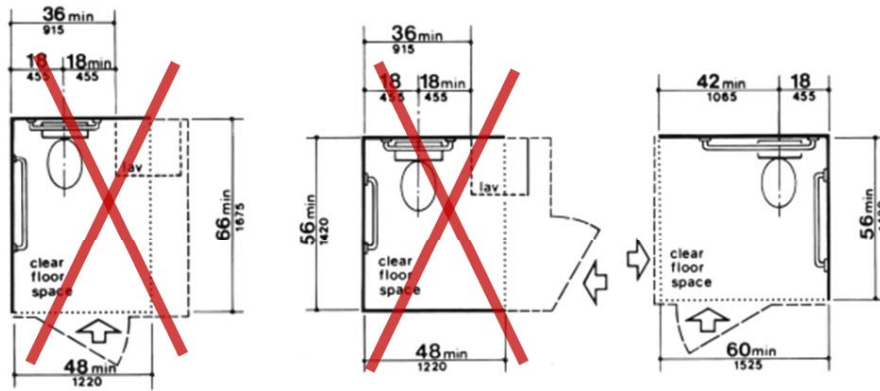


UNITED STATES ACCESS BOARD

44

# Water Closets

*Original ADAAG (fig. 28) permitted overlap*



45

# Water Closet Clearance

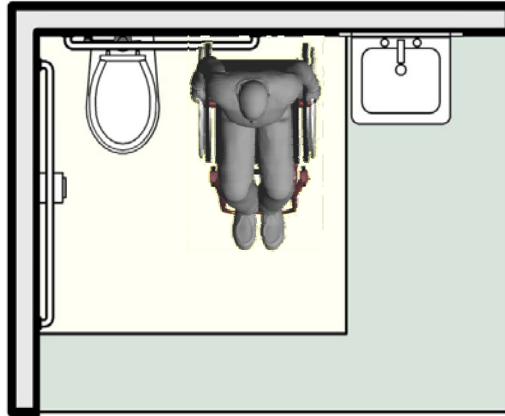
No longer permitted under new standards



46

# Toilet Rooms

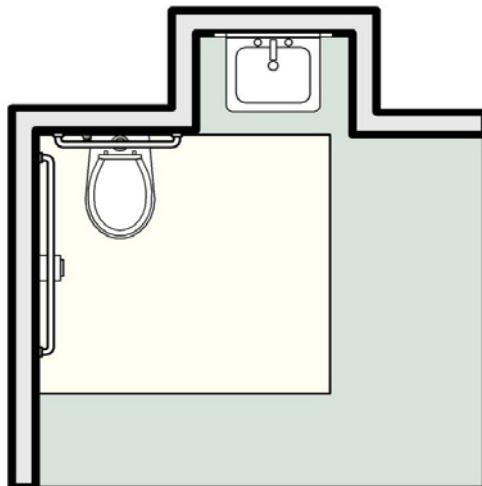
Allows space for side transfers



UNITED STATES ACCESS BOARD

47

# Toilet Rooms



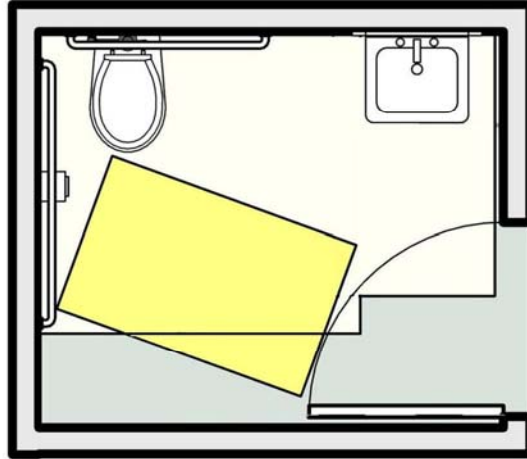
- fixtures can be recessed
- shorter (24" min.) rear grab bar allowed in this case

UNITED STATES ACCESS BOARD

48



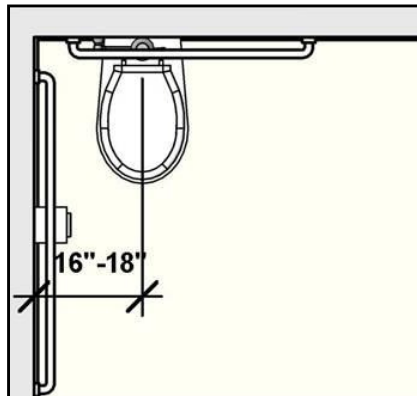
## Toilet Rooms



Doors can swing into fixture clearances if clear floor space (30" x 48" min.) provided outside swing

49

## Toilet Rooms



- Range for toilet centerline
- lavatory cannot overlap toilet clearance (except in dwelling units)

UNITED STATES ACCESS BOARD

50

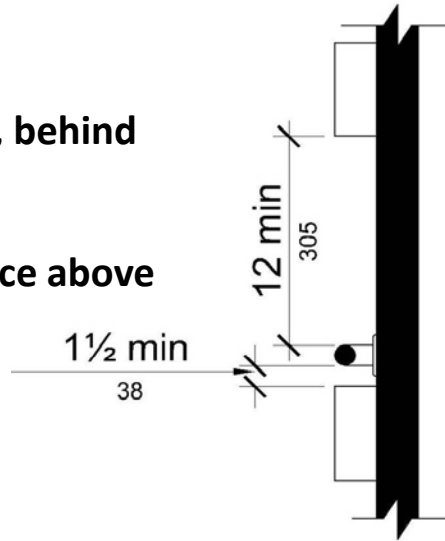
# Grab Bars

## Clearances

1 ½" min. below, behind

*New standards:*

12" min. clearance above



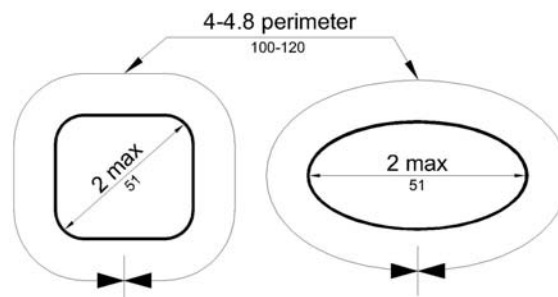
51

# Grab Bars

Diameter: 1 ¼" - 1 ½"

*New standards:*

- 1 ¼" - 2"
- specifications for non-circular cross sections

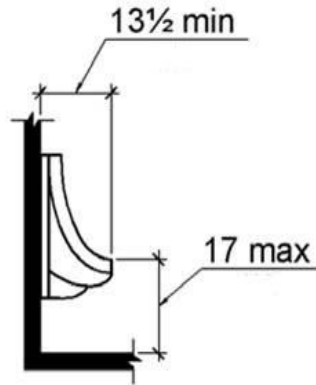


52

## Urinals

**17" max. height, elongated rim**

***New standards: "elongated" = 13 ½" min.***



53

## Children's Toilets

**Alternate Specifications:**

- **WC centerline: 12" – 18"**
- **WC seat height: 11" – 17"**
- **Grab bar height: 18" – 27"**
- **Dispenser height: 14" – 19"**

54

# Children's Toilets

Advisory information provides guidance according to age group

	Ages 3 & 4	Ages 5 - 8	Ages 9 - 12
WC Centerline	12 in	12 - 15 in	15 - 18 in
Toilet Seat Height	11 - 12 in	12 - 15 in	15 - 17 in
Grab Bar Height	18 - 20 in	20 - 25 in	25 - 27 in
Dispenser Height	14 in	14 - 17 in	17 - 19 in

55

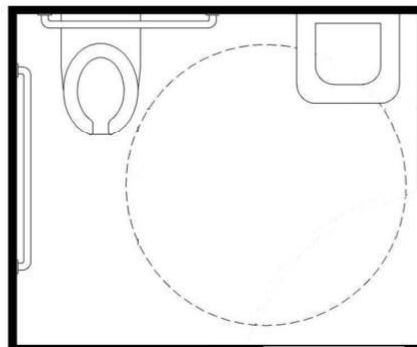
# Toilet Stalls

Lavs in toilet stalls

***New standards:***

**Stalls with more >1 plumbing fixture treated as toilet room**

**Second accessible lav required outside stall**



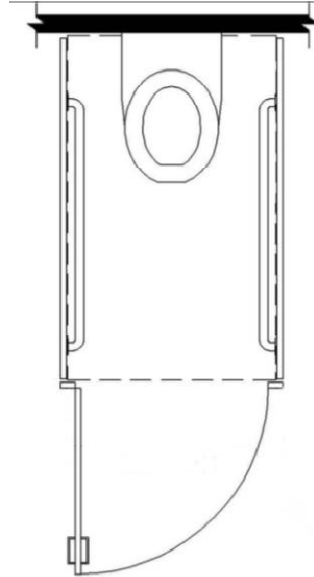
56

## Ambulatory Stall

- parallel grab bars
- width: 36" (absolute)
- doors: out-swinging, self-closing

### *New standards:*

- width 35" – 37"
- depth: 60" min.



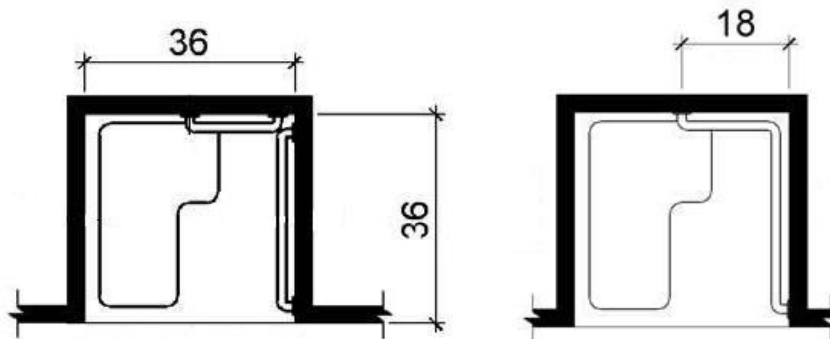
57

## Bathing Facilities

58

## Transfer Stall

Stall dimensions: absolute, not minimum  
*New standards: 36"* measured at center point

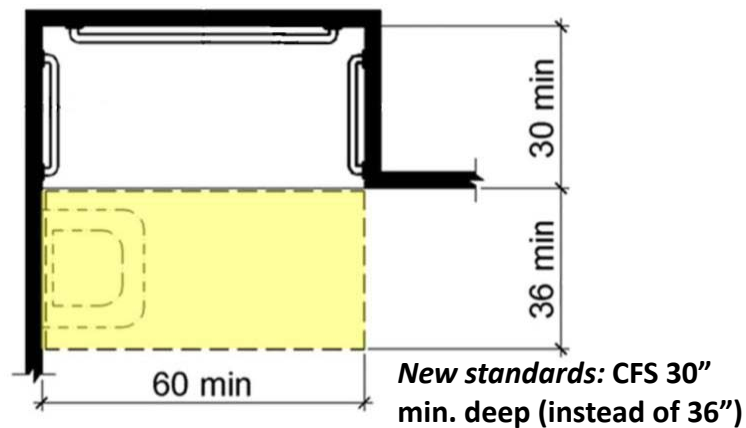


Grab bars can be continuous or split

59

## Roll-in Shower (no seat)

Stall dimensions and clear floor space  
(lav can overlap space)



60

# Shower Spray Unit

Hand-held shower spray unit required for showers and tubs (exception for “unmonitored” facilities)

*New standards:*

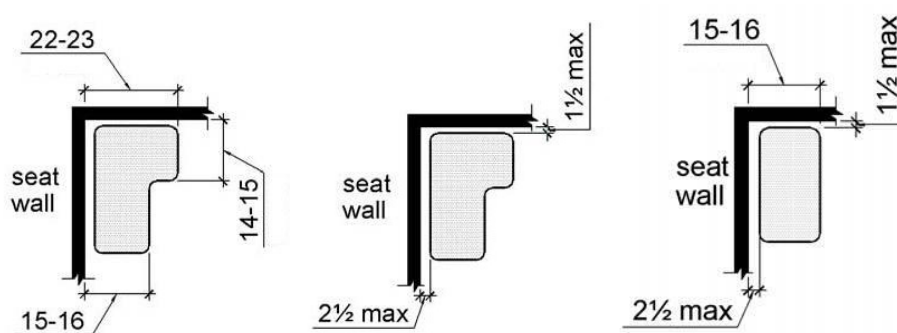
- on/off control
- water temperature (120 degrees max.)



61

# Seats

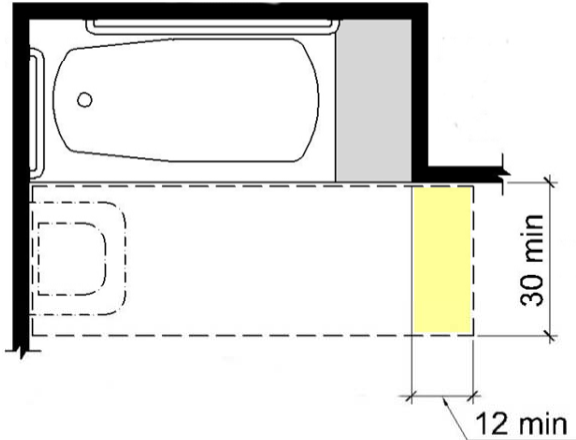
*New standards: specifications for L-shaped and rectangular seats*



62

## Bath Tub (Permanent Seat)

Clear floor space at tub with permanent seat



*New standards: additional space beyond seat wall*

63

## Residential Dwelling Units

UNITED STATES ACCESS BOARD

64



## Residential Dwelling Units

Guidelines apply primarily to State or local government housing and public accommodations housing

(Fair Housing Act covers multi-multi-family housing in public and private sectors )



UNITED STATES ACCESS BOARD

65

## Residential Dwelling Units

### Scoping:

- 5% wheelchair accessible
- 2% communication access features
- Recognize coverage by HUD 504 regulations
- Exception for facilities with 15 or fewer units
- Units for sale (DOJ or HUD regs)

UNITED STATES ACCESS BOARD

66

# Residential Dwelling Units

## Residential Facilities vs. Transient Lodging (definitions)

*Residential:* long-term in nature,  
used as residence



*Transient:* short-term in nature,  
not used as residence



# Assembly areas

## Assembly Areas

### Wheelchair Spaces

lower scoping for  
assembly areas with  
more than 500 seats:



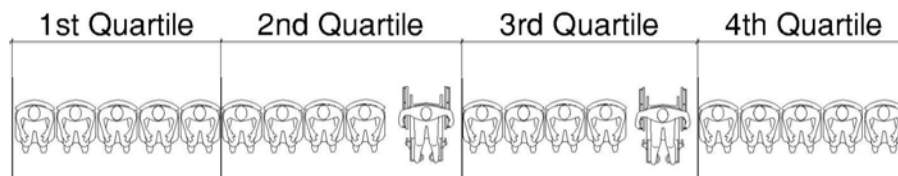
- 501 – 5,000 seats: 1 space/ every 150 seats (instead of 1%)
- > 5,000: 0.5% scoping

69

## Assembly Areas

### Horizontal Dispersion

Exception (300 seats max.) if:  
spaces & companion seats located in  
the 2<sup>nd</sup> or 3<sup>rd</sup> quartile of row



UNITED STATES ACCESS BOARD

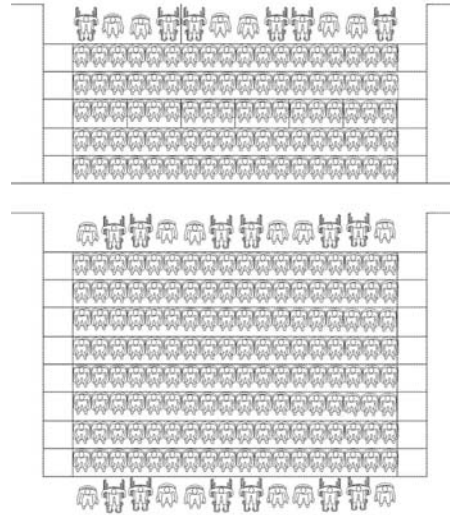
70

## Assembly Areas

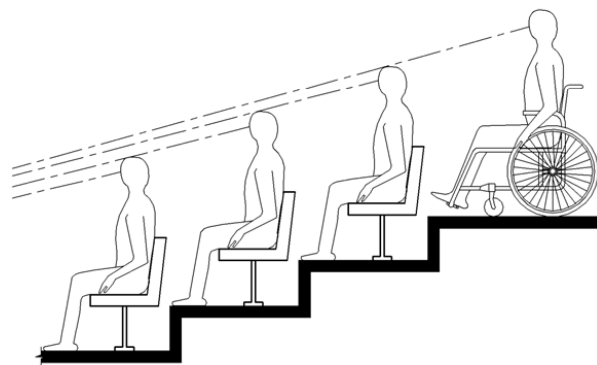
### Vertical Dispersion

Exception (300 seats max.) if:

viewing angles = or better than the average viewing angles in the assembly area

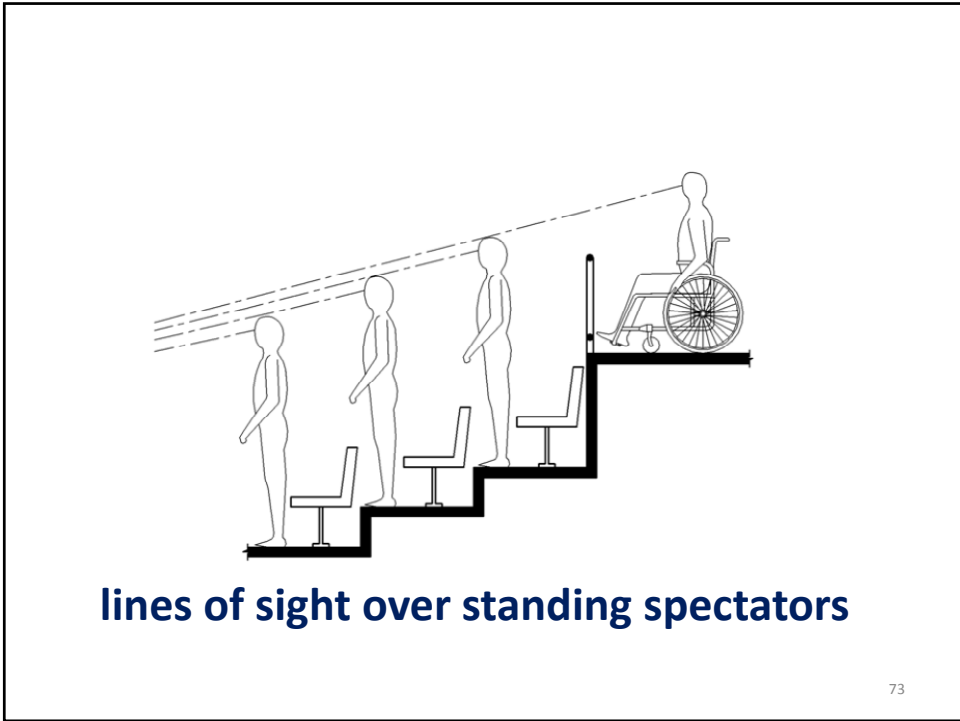


71



**Wheelchair spaces must provide comparable lines of sight**

72



## Fire Alarms

**NFPA 72  
(1999 or 2002)**

**guidelines require  
110 dB max.**

The image shows the cover of the National Fire Alarm Code, 2002 Edition. The cover is split vertically into red and blue sections. The title 'National Fire Alarm Code' is in white on the red background, with '2002 EDITION' in smaller white text below it. 'NFPA 72' is in the top right corner. The NFPA logo is in the bottom right corner. The cover features a graphic of a fire alarm bell and sound waves.

**UNITED STATES ACCESS BOARD**

74

## Fire Alarms

NFPA 72 covers:

- flash rate & pulse duration
- location - wall & ceiling
- minimum intensity
- larger coverage thru fewer appliances
- many spaces (other than corridors) can be covered by 1 appliance
- synchronization of multiple appliances



75

## Signs

- Raised characters
- Braille
- Visual characters
- Pictograms



UNITED STATES ACCESS BOARD

76

## Signs

- Tactile/ visual – labels for permanent rooms & spaces, exit doors
- Visual only – directional or informational signs
- Exempt: temporary signs, building menus, directories, addresses, company names and logos



77

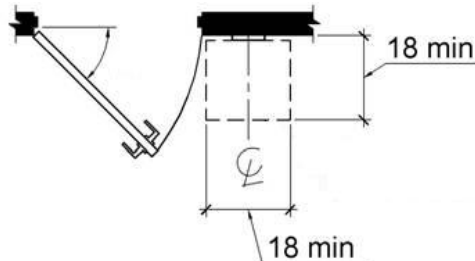
## Signs

### Location (tactile signs)

- latch side of doors, 60" high (to centerline)

### *New standards:*

- more detail, 48" – 60" height, allowed on push side of doors (without hold-open devices)



78

## Telephones

- Volume controls on all public phones
- 20 dB (12 dB intermediate step)
- Automatic reset

### TTYs:

- 34" min. height keyboard (unless seats provided)
- Revised scoping



UNITED STATES ACCESS BOARD

79

## Assistive Listening Systems

### Required where:

- audible communication = integral to use of the space and
- audio amplification
- courtrooms



Not triggered by fixed seating or occupant load

New technical criteria (sound pressure level, signal-to-noise ratio, peak clipping level)

80



## ATMs and Fare Machines

Access to 1 of each type at each location

- speech output
- privacy
- input controls
- display screen
- Braille instructions (for speech mode)



UNITED STATES ACCESS BOARD

81

## Two-Way Communication Systems

Audible and visual signals required



UNITED STATES ACCESS BOARD

82

## Where to direct questions



### U.S. Department of Justice

- Implementing regulation and additional requirements
- Requirements for existing facilities – title II & III

(800) 514-0301 (voice)

(800) 514-0383 (TTY)

[www.ada.gov](http://www.ada.gov)



### U.S. Access Board

- 2010 Accessibility Standards for new construction and alterations

(800) 872-2253 (voice)

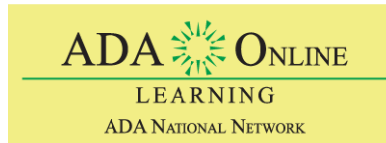
(800) 993-2822 (TTY)

(202) 272-0081 (FAX)

[ta@access-board.gov](mailto:ta@access-board.gov)

[www.access-board.gov](http://www.access-board.gov)

83



Thank you for participating in today's  
ADA-Audio Conference Session

**The 2011-2012 Schedule is available on-line**

**The next scheduled session is:  
Planning A Trip: What You Need To Know  
About Making Hotel Reservations  
February 21, 2012**

Register at: [www.ada-audio.org](http://www.ada-audio.org) or call 866-232-1990 V/TTY

84